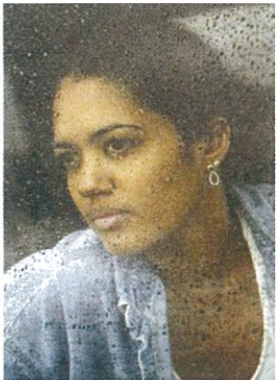


What Happens After I Give My Permission?

There are several steps that the team will take after you sign the permission form:

1. Together, you and the SAP team will develop a plan of action to help your child achieve success in school. The plan might include services and activities in school and/or services from a community agency. If necessary, the SAP team will talk with you about services in the community and give you information on how to contact others who may be able to help.
2. The SAP team will continue to work with and support your child. They will stay in touch with you to talk about your child's progress and success in school. Your continued involvement is very important.



Contacting Your School's Student Assistance Program

If you feel that your child may need help, call your child's school and ask to speak with a member of the SAP team. Someone will be there to help.

Privacy

The SAP team and the school will respect you and your child's privacy at all times.

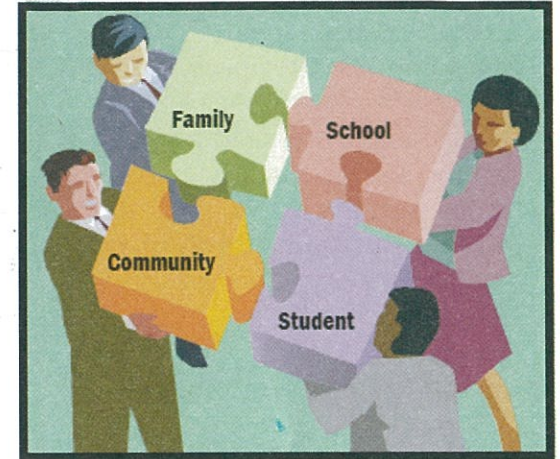
www.sap.state.pa.us

To obtain additional copies of this pamphlet, call voice (717) 783-6777 or TTY (717) 783-8445

The Pennsylvania Department of Education (PDE) does not discriminate in its educational programs, activities, or employment practices, based on race, color, national origin, sex, sexual orientation, disability, age, religion, ancestry, union membership, or any other legally protected category. Announcement of this policy is in accordance with State law including the Pennsylvania Human Relations Act and with Federal law, including Title VI of the Civil Rights Act of 1964, Title IX of the Education Amendments of 1972, Section 504 of the Rehabilitation Act of 1973, the Age Discrimination in Employment Act of 1967, and the Americans with Disabilities Act of 1990.

January 2008

Are You Worried About Your Child?



The Student Assistance Program Can Help

A Guide for Parents and Families



The Commonwealth of Pennsylvania
Departments of Education, Health,
and Public Welfare

Do You See Your Child Showing Any of These Behaviors?

- Withdrawing from family, friends and/or school
- Changing friends; no longer spends time with old friends
- Unexplained physical injuries
- Talking about suicide
- Depressed
- Defying Authority, both at home and at school
- Acting aggressively
- Lying
- Needing money without an explanation
- Sudden drop in grades
- Experimenting with drugs or alcohol

Are You Concerned About Your Child's Reaction To:

- Recent death of a loved one
- Divorce of parents
- Family relocation
- A relationship problem
- Other traumatic event

If your child is having trouble in or out of school, we can help you. There may be times when you just don't know how to help your child. That's okay; someone else may know how to help.

What is the Student Assistance Program?

In Pennsylvania, every school district is required to have a plan for identifying and assisting students who experience "barriers to learning". The Secretary of Education established the Student Assistance Program as a Pre-K through Twelfth Grade system for assisting parents and school personnel in removing these barriers. A SAP team, made up of school and agency staff, is available to help you access school and community services for your child.

Your school's SAP team will help you find services and assistance within the school and, if needed, in the community. We do not diagnose, treat, or refer your child for treatment. Rather, we will provide you with information; you make the choices. Remember, you are part of our team. Our goal is to help your child succeed in school.

How does My Child Become Involved in the Program?

Students come to the SAP team in different ways. Anyone can refer a student to the Student Assistance Program. Some students are referred by teachers and other school personnel. Any school staff member,

a student's friend or family member can let the SAP team know that they are worried about someone. The students themselves can even go directly to the SAP team to ask for help. However, the SAP team will not become involved unless we receive your permission.

What if Someone Has Already Referred My Child to the Program?

First, know that your child was referred because someone is concerned about observable changes they are seeing in your child. Perhaps a teacher or friend has noticed changes in behavior and habits that you may or may have noticed at home.

The SAP team will request that you sign a permission form for your child to become involved in the program. Once you sign, the SAP team will begin to work with you and your child. If you feel you need more information before making a decision, please let your SAP team know. If you do not sign the permission form, the SAP team will not become involved. Participation is voluntary.