



Selinsgrove Area School District Reopening Plan Overview

August 10, 2020

Becoming Informed

An aerial photograph of a school campus. In the foreground, a large, multi-story brick building with a grey roof is the central focus. To the right of the building is a parking lot with several cars. In the background, there are several sports fields, including a baseball field and a soccer field, surrounded by trees and a fence. The campus is situated on a hillside with other buildings and houses visible in the distance under a cloudy sky.

- Acquiring Meaningful Data
- Weekly Meetings From June 15 – July 23
- Draft Plan Posted – July 24
 - Video Overview
 - Educational Options
 - Educational Options Frequently Asked Questions (FAQs)
 - General FAQs
- Educational Options Family Enrollment Form
- Receipt of Public Comments – Please Continue to Provide Feedback

Pandemic Coordinator Team

An aerial photograph of a school campus. The main building is a large, multi-story brick structure with a central entrance. To the right, there are several sports fields, including a baseball field and a tennis court. The campus is surrounded by trees and a parking lot with several cars. In the background, there are rolling hills and a residential area.

- Superintendent
- Assistant Superintendent
- Business Manager
- Facilities Director
- Principals
- Teachers (Building Reps)
- Food Service Director
- School Lead Nurse
- District Safety Coordinator
- Board Members
- Clerical Staff
- Emergency Management
- Parent(s)
- Licensed Medical Professional(s)

Data Collection

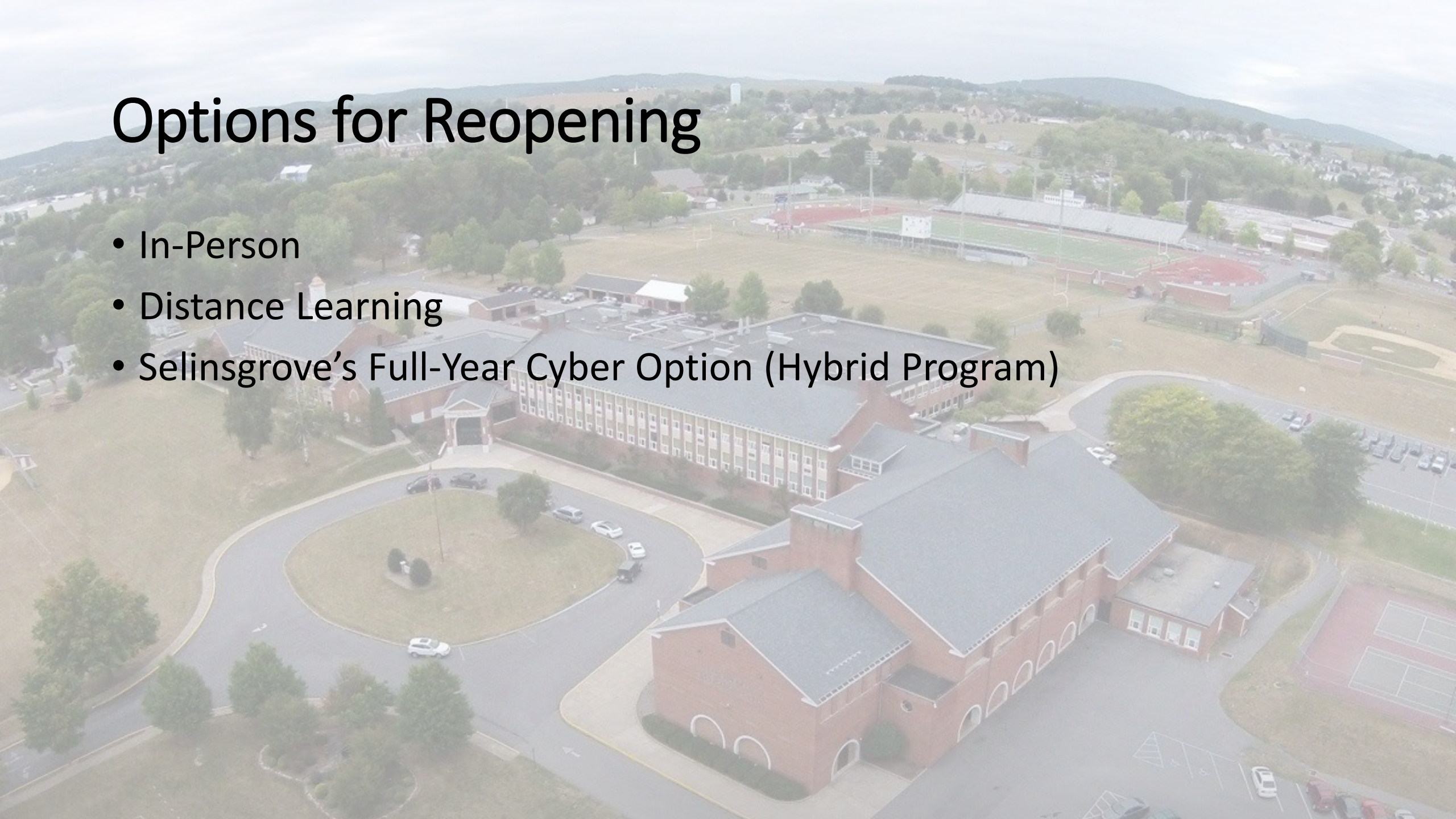
An aerial photograph of a school campus. In the foreground, there is a large, multi-story brick building with a grey roof and several arched windows. To the left of the building is a parking lot with several cars. In the background, there are several sports fields, including a baseball field and a soccer field, surrounded by trees and a fence. The campus is set against a backdrop of rolling hills and a residential area under a cloudy sky.

- Family Feedback Survey #1
- Teacher Feedback Survey
- Family Feedback Survey #2
- Educational Options Family Enrollment Form

* Personal conversations and feedback provided to school district have and will be respectfully considered as a meaningful form of feedback.

Options for Reopening

- In-Person
- Distance Learning
- Selinsgrove's Full-Year Cyber Option (Hybrid Program)



Cleaning, Sanitizing, Disinfecting and Ventilation

- Additional cleaning supplies will be procured to support additional cleaning and disinfecting practices.
- Deep cleaning of entire buildings will take place prior to the start of the school year.
- Disinfectant cleaners will be available in every classroom for staff to use throughout the day.
- Checklists will be created to ensure each room is thoroughly cleaned and disinfected daily.
- Additional water bottle filling stations are being installed throughout the district.
- Water bottle filling stations will be used and cleaned several times throughout the day. Traditional water fountain use will be greatly reduced/prohibited.
- Additional hand sanitizers will be available in high- traffic areas
- HVAC system adjustments will be made to maximize filtration and outside air flow.
- Electrostatic sprayers will be used in all areas of the buildings.
- Rate of cleaning common areas and classrooms will increase to multiple times daily.
- Bus drivers will clean common areas of busses after each run (AM/PM).
- The Transportation and School Safety Coordinator will work with the bus contractors in order to ensure that cleaning/sanitizing occurs daily in a shared effort between the school district and bussing company.

Cleaning, Sanitizing, Disinfecting and Ventilation

- HVAC system adjustments will be made to maximize filtration and outside air flow.
- Electrostatic sprayers will be used in all areas of the buildings.
- Rate of cleaning common areas and classrooms will increase to multiple times daily.
- Bus drivers will clean common areas of busses after each run (AM/PM).
- The Director of Transportation and Student Safety will work with the bus contractors in order to ensure that cleaning/sanitizing occurs daily in a shared effort between the school district and bussing company
- The Director of Facilities and Maintenance will contact and secure the services of extra/substitute custodians, if necessary, to meet the needs of additional cleaning/sanitizing.

Social Distancing and Other Protocols

An aerial photograph of a school campus. In the foreground, there is a large, multi-story brick building with a grey roof and arched windows. To the right of the building is a tennis court. In the background, there is a baseball field with a red infield and a green outfield. The campus is surrounded by trees and a parking lot with several cars. The sky is overcast.

- **Classrooms**

- Classroom and other instructional spaces will be arranged to allow as much distance as possible between students and staff.
- Classroom and other instructional spaces will be arranged so that all students are facing the same direction.
- Larger areas will be used for larger classes to allow for social distancing (auditorium used for band/chorus, library availability, outdoor learning venues, etc.)

Social Distancing and Other Protocols

- **Cafeterias and Other Congregate Settings**

- Cafeteria/Eating areas will be expanded to include common areas such as lobbies, libraries, outdoor spaces, gymnasiums, LGIs (large group instruction rooms) to support social distancing.
- Face to face seating will be avoided in lunch settings.
- The scaffolding/staggering of lunch schedules will occur to limit the number of students in the cafeteria or serving lines.
- Touchless transactions will occur at the point of sale in the cafeteria.
- Bagged lunch and/or more “grab and go” options will be part of the daily lunch menus to eliminate the need for shared utensils.
- Assemblies will be limited and will comply with guidelines for social distancing.
- Classrooms may be used for lunch in an effort to maximize social distancing.

Social Distancing and Other Protocols

An aerial photograph of a school campus. In the foreground, there is a large, multi-story brick building with a grey roof and several arched windows. To the right of the building is a tennis court. In the background, there is a baseball field with a red infield and a green outfield. The campus is surrounded by trees and a parking lot with several cars. In the far background, there are rolling hills under a cloudy sky.

- **Hygiene and Other Practices**

- Students will be encouraged to wash hands upon entering rooms, before and after lunch, and throughout the day as needed
- All students will have access to a personal hand sanitizer and hand sanitizer stations placed throughout the buildings.

- **Signage Promote Protective Measures**

- Signs that highlight hygiene, hand washing, and social distance will be posted in classrooms, restrooms, and communal areas.

Social Distancing and Other Protocols

- **Identifying and Restricting Non-Essential Visitors and Volunteers**
 - Visitors, volunteers, and presenters will be limited.
 - Only volunteers who are deemed essential (i.e. Elementary school cafeteria volunteers) will be permitted.
- **Sports, Recess, and Physical Education Classes**
 - Athletics programs will follow the guidance of the PIAA and the school districts Health and Safety Plan for Extracurricular Activities.
 - Physical education classes will adhere to social distancing measures and take place outdoors as much as possible.
- **Limiting Shared Materials**
 - Students will be assigned their own instructional supplies (to the greatest extent possible).
 - Equipment that needs to be shared will be cleaned/disinfected between use.

Social Distancing and Other Protocols

- **Staggering the Use of Communal Spaces and Hallways**

- Hallway traffic will be reduced through the creation of staggered schedules for times of transitions. This will include lunch times and times when students use lockers.
- Upon arrival to the schools, students will proceed immediately to classrooms (versus the traditional gathering in lobbies and communal areas).
- Locker use will be eliminated or reduced in buildings where feasible.

- **Transportation Practices**

- Families will be asked to drive their children to school, if possible, to reduce the number of students who ride busses.
- Students within the same family will be assigned seats together.
- Traffic patterns will be altered (when possible) to accommodate an increase in campus traffic due to higher number of students being dropped off.
- There will be increased flexibility in attendance requirements (i.e. tardies).
- Procedures for boarding and loading busses will be changed to minimize times on school transportation.
- Universal Face Coverings will be required on busses per Governor's Order.

Social Distancing and Other Protocols

An aerial photograph of a school campus. In the foreground, there is a large, multi-story brick building with a grey roof. To the right of the building, there is a baseball field with a red infield and a green outfield. Further to the right, there are tennis courts. The campus is surrounded by green trees and a parking lot with several cars. In the background, there are rolling hills under a cloudy sky.

- **Limiting the Number of Individuals**

- Instructional practices (cooperative or collaborative) will be adjusted to limit the interactions between students and group of students.
- Restrictions will be in place regarding classroom visitors, presenters, and volunteers.
- Related Arts teachers will travel to classrooms instead of students transitioning in the halls when possible.
- Desks will be arranged to allow for social distancing to the maximum extent feasible.

- **Coordinating with Local Childcare**

- On-site child care providers will be required to take the same applicable action steps as detailed in this plan

Social Distancing and Other Protocols

An aerial photograph of a school campus. In the foreground, there is a large, multi-story brick building with a grey roof and several arched windows. To the right of the building is a tennis court with a red surface. In the background, there is a baseball field with a green field and a red infield. The campus is surrounded by trees and a parking lot with several cars. The sky is overcast.

- **Other Social Distancing Practices**

- The number of outside organizations requesting the use of facilities will be restricted. Any groups approved for use of district facilities may incur the cost of additional cleaning and sanitizing.
- The use of outdoor spaces will be prioritized over indoor spaces as much as possible.
- Field trips will be restricted and considered on a case by case basis.

Monitoring Student and Staff Health

- **Symptoms and History of Exposure**

- Education will be on provided on an on-going basis regarding COVID-19 symptoms.
- The school will provide expectations for staff, families, and students to report symptoms or exposure.
- Parents will be expected to use self-screening tools/symptoms checklists that will be provided to families.
- Students will have their temperatures taken each morning (homeroom/first period upon entry into the building).
- The nurse will screen any individual who presents COVID-19 symptoms during the school day.
- Students and staff will be encouraged to report absence from school if it is COVID Related COVID-19 related.

Monitoring Student and Staff Health

- **Isolating or Quarantining**

- Designated areas will be created in each building to allow for isolation.
- Individuals believed to be sick or having been in close contact with someone who is sick will be required to report to the designated area.
- Parents will be expected to have a plan in place for picking up a student when directed by school nurse.
- An individual (who is sick or may have been in close contact with someone believed to be sick) will be isolated until he/she is dismissed from school.

Monitoring Student and Staff Health

An aerial photograph of a school campus. In the foreground, there is a large, multi-story brick building with a grey roof. To the right of the building is a baseball field with a green infield and a red outfield. Further to the right, there are several tennis courts. The campus is surrounded by green trees and a parking lot with several cars. In the background, there are rolling hills under a cloudy sky.

- **Returning from Isolation/Quarantine**

- Medical documentation will be required for any individual who wishes to return following a positive COVID-19 test or quarantine.
- PA Department of Health/PDE Guidelines will be followed to determine the length of time an individual who tests positive needs to be removed or determine a return to school.

- **Notifying of Closures**

- The Selinsgrove Area School District will utilize its notification system in order to inform the community of school closures or adjustments to safety protocols.
- The district will utilize the PA Department of Health, PDE, and local health care and emergency management personnel as resources

Other Considerations

An aerial photograph of a school campus. The main building is a large, multi-story brick structure with a grey roof and a central entrance. To the left of the building is a circular driveway with a grassy center. To the right and in the background, there are several sports fields, including a baseball field and a tennis court. The campus is surrounded by trees and a residential area in the distance under a cloudy sky.

*Protecting Students and Staff at Higher Risk

- Remote learning will be an option for all families through Selinsgrove Area School District's Flexible Instructional Model.

Face Coverings

- Per the Governor’s Universal Face Covering Order and [PDE guidance](#) as of July 16, 2020 all students and staff will be required to wear a face covering during times at which desired social distancing is not able to be maintained (i.e. hallway transitions, busses, classroom entry and exit, etc.).
- From PDE:
 - “Schools should provide face covering breaks throughout the day. Maintain a distance of at least 6 feet during these face covering breaks. Schools may allow students to remove face coverings when students are: Eating or drinking when spaced at least 6 feet apart; Seated at desks or assigned workspaces at least 6 feet apart; Engaged in any activity at least 6 feet apart (e.g., face covering breaks, recess, etc.); or When wearing a face covering creates an unsafe condition in which to operate equipment or execute a task.”

Frequently Asked Questions

Please use this [link](#) to access ongoing lists of questions and accompanying answers pertaining to reopening.

Topics Consistently Revisited:

- The SASD Reopening Plan requires a face covering for students and staff in accordance with PA State Orders at this time. What if people do not comply?
- Will face coverings be provided?
- 6 Feet Expectation and Analysis – Maximum Extent Feasible
- What to do in the event of a positive case?
- Contact Tracing Protocol – The District is Required to Not Release Personal Medical Information to the Community

Frequently Asked Questions

- One-Hour Delay – School District and Community Assistance
- Traffic Considerations
- Daily Health Checks – At Home and In-School
- Dedicating Personnel to Distance Learners Only
- Notifying the School District of Your Chosen Educational Option
- Attendance Protocol For Distance Learners – Sapphire Form

*We will be reviewing communications and making additions to the school district's frequently asked questions page. Please refer to your child's teacher and/or building principal for aspects pertaining solely to those environments.

Moving Forward

An aerial photograph of a school campus. The main building is a large, multi-story brick structure with a grey roof and arched windows. To the left, there is a circular driveway with a grassy center. In the background, there are several sports fields, including a baseball field and a tennis court. The campus is surrounded by trees and a residential area in the distance under a cloudy sky.

- We will continue to evaluate the effectiveness of the plan and make adjustments as necessary.
- Our goal from the beginning has been to provide the flexibility to the school district community so that all feel as though their viewpoint has been valued throughout the process while balancing all external mandates and expectations.